

SP.167 – HERMETIC™ CVP Wall Coating Submittal Package

Revised: 04/05/2022 Version: 1.1

Page 1 of 6

Summary of available HERMETIC™ CVP Wall Coating Systems

HERMETIC™ CVP Wall Coatings are available in the following systems engineered for a variety of specialty applications.

1) NWC-289 (Neat CVP Wall Coating)

A highly abrasion and chemical resistant wall coating system.

2) FWC-676 (Flake CVP Wall Coating)

A highly abrasion and chemical resistant wall coating system that incorporates a single layer of blended color flakes.

Contact a local Elite Crete Systems representative for additional help selecting the appropriate flooring system for your needs.

Table of Contents

1. Submittal Overview

- 1.1. Features
- 1.2. Uses
- 1.3. Physical Properties
- 1.4. Surface Preparation

2. Products

- 2.1. Base Coat & Secondary Coat Product Options
- 2.2. Flake Broadcast Options
- 2.3. Body Coat Product Options
- 2.4. Protective Top Coat Product Options

3. Reference Model

- 3.1. HERMETIC™ CVP 3D Floor Model

4. Color Chart

- 4.1. HERMETIC™ CVP Color Options
- 4.2. HERMETIC™ Flake Color Chart

5. Maintenance

- 5.1. General Maintenance

6. Additional Application Options

- 6.1. Cove Base
- 6.2. Floor Coating

SP.167 – HERMETIC™ CVP Wall Coating Submittal Package

Revised: 04/05/2022 Version: 1.1

Page 2 of 6

1. SUBMITTAL OVERVIEW

HERMETIC™ CVP Ceramic Wall Coating is a 100% solids, high gloss vertical finish with superior abrasion and chemical resistance. Formulated with a high molecular density with excellent light reflectivity withstanding repeated washings. Exceeds requirements for USDA, FDA and CFIA inspected facilities.

1.1 – FEATURES:

- Ease of maintenance
- Highly chemical and abrasion resistant
- Pick-proof coatings for prisons

1.2 – USES:

- Commercial bathrooms
- All food manufacturing & processing plants
- Block walls, concrete, cement board & sheetrock
- Pharmaceutical facilities & clean rooms
- Prisons

1.3 – Physical Properties

Testing results for each flooring system will vary depending on the individual components chosen to meet the specific project requirements. Performance testing results are available by contacting a technical representative, or by visiting www.elitecrete.com/technical-data/

1.4 – Surface Preparation

Contact your local Elite Crete Systems technical representative for information regarding project-specific preparation and recommended testing.

2. PRODUCTS

The following products are intended to be used as part of a complete flooring system and not to be used as standalone products.

2.1 – Base Coat & Secondary Coat Product Options

The products listed in this section can be used for a base coat. The product being used should be selected based on the chosen system and the performance requirements of the project. The base coat (as pertains to this document only) references the product that the vinyl flake media is broadcast into.

A) HERMETIC™ CVP Ceramic Wall Coating

HERMETIC™ CVP Ceramic Wall Coating is a 100% solids, high gloss vertical finish with superior abrasion and chemical resistance. Formulated with a high molecular density with excellent light reflectivity withstanding repeated washings.

2.2 – Flake Broadcast Options

The products listed in this section can be used for a base coat. The product being used should be selected based on the chosen system and the performance requirements of the project. The base coat (as pertains to this document only) references the product that the vinyl flake media is broadcast into.

SP.167 – HERMETIC™ CVP Wall Coating Submittal Package

Revised: 04/05/2022 Version: 1.1

Page 3 of 6

A) Vinyl Flake Media

Specially formulated paint aggregates used to enhance the aesthetic and ergonomic qualities of resinous performance flooring and wall coating systems. Vinyl flake media is available in a wide range of colors, sizes, styles and blends to meet your design needs.

2.3 – Body Coat Product Options

The products listed in this section can be used for a body coat. The product being used should be selected based on the chosen system and the performance requirements of the project. The body coat (as pertains to this document only) references the product that goes over the flake broadcast.

A) E100-PT1™ Standard or FAST

E100-PT1™ Clear Epoxy is 100% solids, low viscosity, water-clear, non-shrink, two-component epoxy designed for a wide variety of applications. E100-PT1™ Clear Epoxy will not blush or water spot and has excellent physical and chemical resistant properties. E100-PT1™ Clear Epoxy is available in standard and fast set formulas.

B) E100-UV1™ Standard or FAST

E100-UV1™ Clear Epoxy is 100% solids, medium viscosity, water clear, non-shrink, two-component epoxy coating, designed for a wide variety of applications. E100-UV1™ Clear Epoxy will not blush or water spot and has excellent physical and chemical resistant properties.

C) E100-VR1™

E100-VR1™ is 100% solids, UV resistant, low viscosity, clear, high gloss, two-component epoxy coating, specifically designed for incidental interior exposure to UV attack. Bonds to slightly damp concrete and is not affected by high humidity. Resistant to microbial growth.

2.4 – Protective Top Coat Product Options

The products listed in this section can be used for a protective top coat. The product being used should be selected based on the chosen system and the performance requirements of the project. The protective top coat (as pertains to this document only) references the final coating that goes over the initial top coat.

A) AUS-V™

AUS-V™ is a high quality, extremely durable, clear, two component, protective urethane coating for epoxy coatings such as the E100™ Series Epoxies, the REFLECTOR™ Enhancer Flooring Systems and the HERMETIC™ Flooring Systems.

Other options may be available for unique project requirements. Consult with a local regional manufacturer representative for information about additional options.

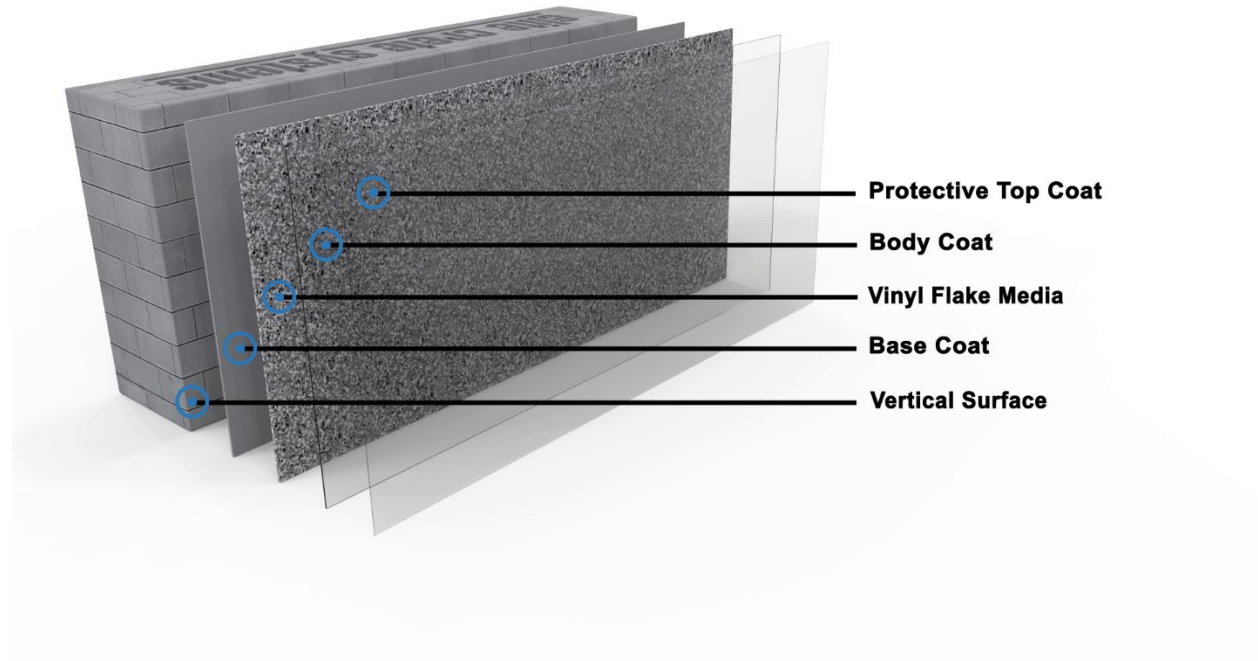
SP.167 – HERMETIC™ CVP Wall Coating Submittal Package

Revised: 04/05/2022 Version: 1.1

Page 4 of 6

3. REFERENCE MODEL

3.1 – HERMETIC™ CVP 3D Wall Coating Model



Reference models are for illustration purposes only and do not depict all available options.

SP.167 – HERMETIC™ CVP Wall Coating Submittal Package

Revised: 04/05/2022 Version: 1.1

Page 5 of 6

4. COLOR CHART

4.1 – HERMETIC™ CVP Color Options

- White
- Tan
- Light Gray
- Custom colors available

** Colors do not exactly match those on the 'Resinous Industrial Coatings' color chart.*

4.2 – HERMETIC™ Flake Color Chart



Desert Stone
(FB-504)



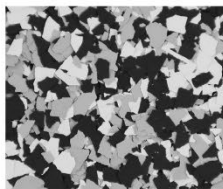
Driftwood
(FB-716)



Sandstone
(FB-421)



Sahara
(FB-517)



Orca
(FB-411)



Gibraltar
(FB-427)



Battleship
(FB-616)



Slate
(FB-414)



Pebble
(FB-713)



Calico
(FB-424)



Twilight
(FB-715)



Abyss
(FB-310)

Note: The colors on this chart are represented as closely as possible. Variations should be expected due to differences in; substrate condition thickness of application, speed of curing, blending of colors, application method and color of initial primer coat. For additional information, see all related Product Information and Technical Data sheets located at elitecrete.com.

SP.167 – HERMETIC™ CVP Wall Coating Submittal Package

Revised: 04/05/2022 Version: 1.1

Page 6 of 6

5. MAINTENANCE

5.1 – General Maintenance

If general care is provided and recommended guidelines observed, the decorative appearance and life of all resinous flooring will be extended.

REFER TO DOCUMENT PI.605 FOR ADDITIONAL CARE AND MAINTENENCE INSTRUCTIONS

6. ADDITIONAL APPLICATION OPTIONS

6.1 – Cove Base

E100-PTG™ Cove Base Resin Gel is a 100% solids, thixotropic clear resin designed for use on vertical applications. (For more information, see document: TD.525 - E100-PTG™)

6.2 – Floor Coating

HERMETIC™ Flooring Systems – Refer to applicable submittal for specified flooring system.

Contact your local Elite Crete Systems technical representative for more information about additional applications options.

