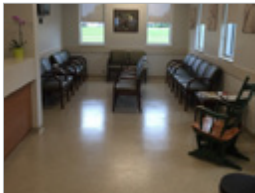


# HERMETIC™ 4.8S Urethane Cement Slurry



CSI Division 9: Flooring - Fluid Applied

**elite crete systems**

Engineered High Performance Surfaces & Flooring

## HERMETIC™ 4.8S Urethane Cement slurry

is a three component, thermal shock resistant, urethane slurry/broadcast, non-slip flooring system. Available in a variety of colors and engineered to meet FDA and USDA requirements for application to food manufacturing, packaging and serving facilities.

HERMETIC™ 4.8S Urethane Cement slurry is intended for floors subject to steam cleaning on a daily basis, resistant to bacterial growth, it is ideal for application to most food and beverage manufacturing and serving facilities. Non slip when wet, will withstand severe traffic exposure.

### TYPICAL AREAS OF USE

- Meat/Poultry and Dairy Processing
- Breweries, and wineries
- Pharmaceutical Plants
- Commercial Kitchens and Restaurants
- Processing Areas
- Automotive Service Bays
- Cold storage facilities

### ADVANTAGES

- Resistant to extreme hot and cold temperature swings (100°F / 38°C to 230°F / 110°C)
- Passes ADA recommendations
- Meets or exceeds FDA AND USDA guidelines
- Will not support bacterial growth
- Osmotic pressure resistant up to 20 lbs (test for suitability)
- Water based, VOC compliant
- CA01350 indoor air quality compliant
- Does not contain phthalates
- Easy clean up with EXIT™
- Antimicrobial

### SPECIFICATION OVERVIEW

- Name: HERMETIC™ 4.8S Urethane Cement slurry
- Finish: High gloss or satin
- Cured Thickness; 3/16" to 5/8"
- Surface preparation and detailed application see manufacturers instructions
- Manufacturer Elite Crete Systems, Inc. +1-219 465-7671

### SAMPLE COLOR CHART



**For integral color and decorative quartz options, contact a technical representative.**

**NOTE:** The colors depicted on this technical document may not illustrate the exact color. Contact a technical support representative for a more accurate color sample. Custom colors available upon request.

## PHYSICAL PROPERTIES

(@ 73°F / 23°C, 7 day ambient cure as a coating)

**Mix Ratio:** Pre-Engineered 3 part unit

**Gel Time:** 14 minutes

**Consistency:** Gage rake slurry

PROPERTY	TEST	RESULT
VOC Content	N/A	0 g/l
Shore D Hardness	ASTM D-2240	75-80
Compressive Strength	ASTM C-579	7,600 psi
Tensile Strength	ASTM D-638	1,600 psi
Flexural Strength	ASTM D-790	2,900 psi
Adhesion	ASTM D-4541	>400 (100% concrete failure)
Impact Resistance	ASTM D-2794	Pass
Abrasion Resistance *	ASTM D-4060	20-25 mg loss
Thermal Shock Resistance	MIL F-52505	Pass
Flammability	ASTM E-648	Class 1
Indoor Air Quality	CA-01350	Compliant
Coefficient of Friction	ASTM D-2047	0.9 (Passes ADA recommendation)

\* CS-17 Wheel, 1 KG load, 1,000 cycles



# elite crete systems

### Elite Crete Systems, Inc.

1061 Transport Drive  
Valparaiso, Indiana 46383

Phone: +1.219.465.7671 Fax: +1.219.531.0898

Toll Free: 888-323-4445

Email: info@elitecrete.com

## www.elitecrete.com

The information herein is general information to assist our customers in determining whether our products are suitable for their specific applications. Our products are intended for sale to commercial and industrial customers. We require that customers should inspect and test our products before use to satisfy themselves as to the content and suitability for the applications they intend to use our products for. Nothing herein shall constitute any warranty expressed or implied, including any warranty of merchantability or fitness for a particular purpose, nor is replacement of our materials and in no event shall we be liable for incidental or consequential damages.